

4

3

2

1

NOTES

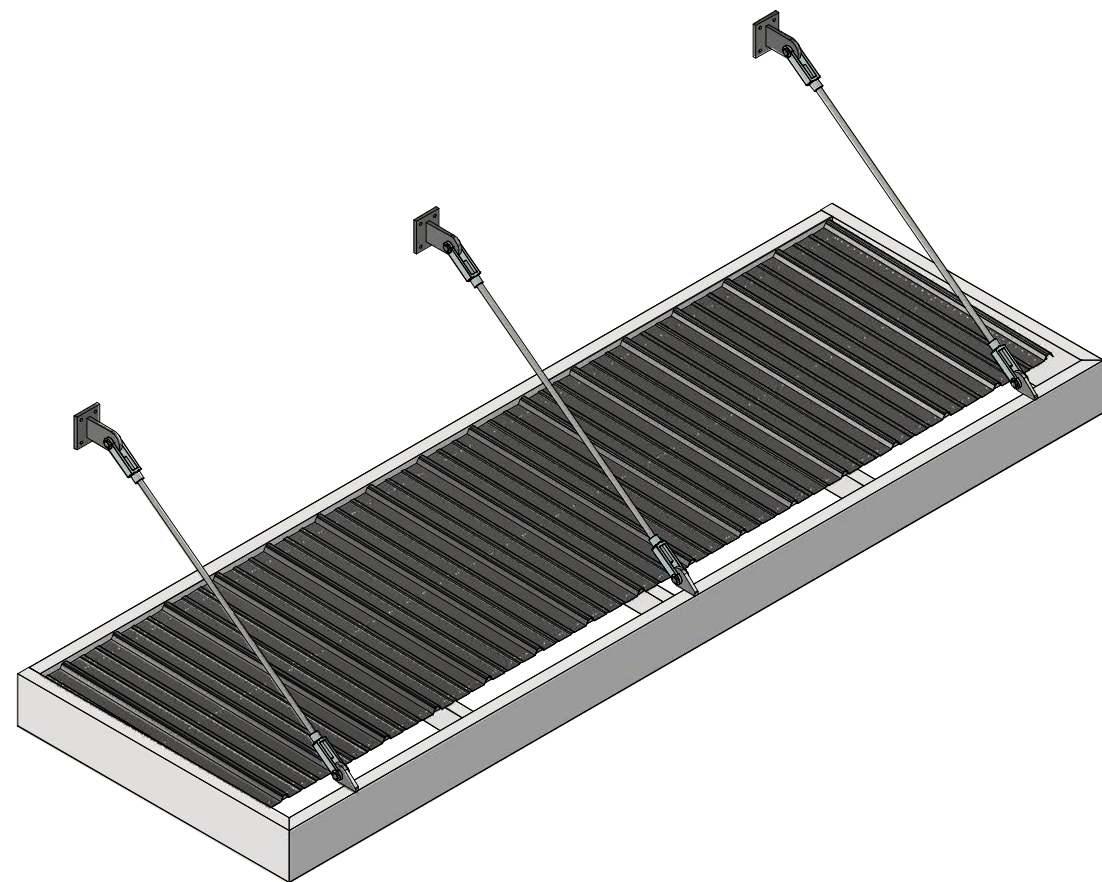
REVISIONS



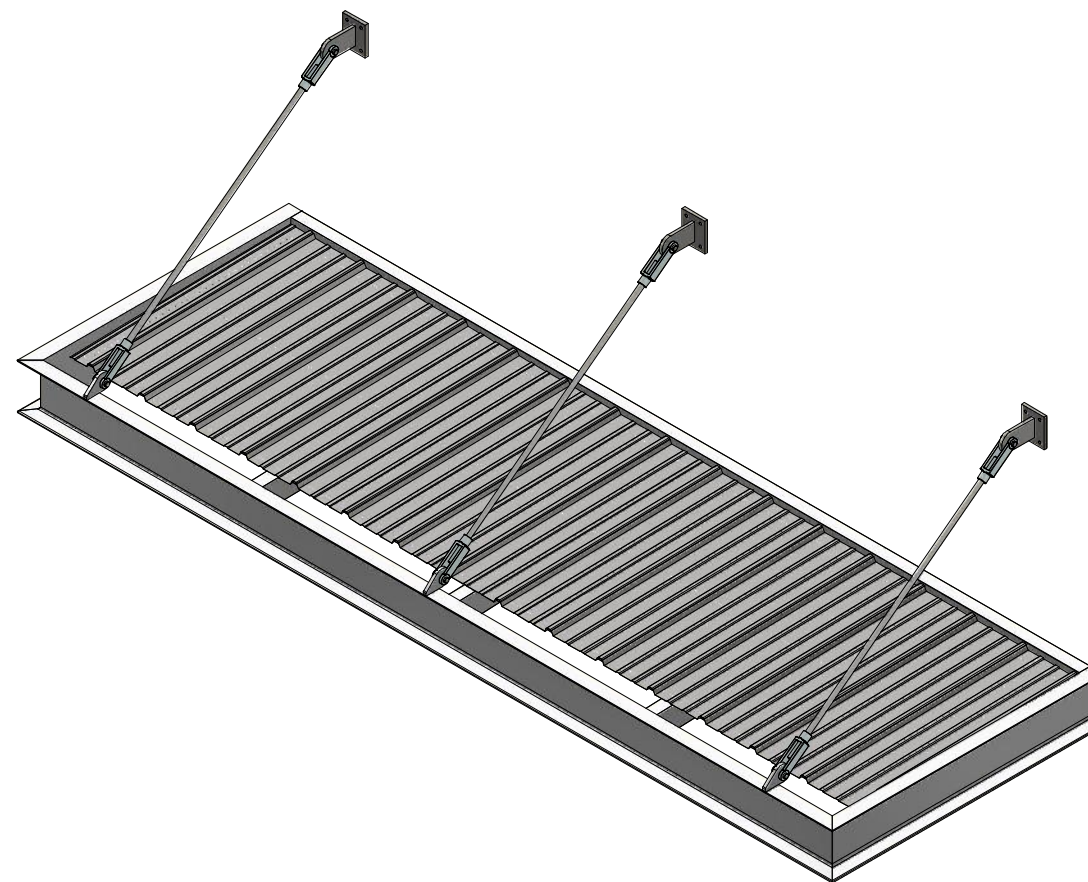
213 E. Ermina Ave.
 Spokane, WA 99207
 Ph: (509)892-6180
 Email: info@vestismfg.com

VESTIS MANUFACTURING
 SPOKANE, WA

CANOPY BASIS OF DESIGN



FLAT FASCIA, FRONT OPEN DRAIN
 SCALE 1/2"=1'-0"



CHANNEL FASCIA, FRONT OPEN DRAIN
 SCALE 1/2"=1'-0"

VESTIS CUSTOM CANOPY

4

3

2

1

B

B

A

A

GENERAL NOTES

1. VESTIS SYSTEMS REQUIRES ONE SET OF CORRECTED DRAWINGS TO REVISE APPROVAL DRAWINGS OR AN APPROVED SET OF DRAWINGS PRIOR TO FABRICATION OF ORDER
2. ORDERS REQUIRING ENGINEERING WILL ONLY BE FABRICATED AFTER ALL DRAWINGS ARE APPROVED
3. CLIENT TO VERIFY ALL CANOPY AND FIELD DIMENSIONS PRIOR TO RELEASE FOR FABRICATION
4. ALL ORDERS NOT APPROVED FOR PRODUCTION WITHIN 90 DAYS 30 DAYS OF ORDER ACCEPTANCE ARE SUBJECT TO REVIEW FOR PRICING (DUE TO RAPID CHANGES IN PRICING OF MATERIALS WE ARE CURRENTLY ONLY GUARANTEEING QUOTES FOR 30 DAYS)
5. ADEQUACY OF BUILDING STRUCTURE MUST BE CERTIFIED BY BUILDING ENGINEER OF RECORD
6. WALL SYSTEMS WITH EFIS, BRICK, VENEER, OR METAL PANEL EXTERIOR MAY REQUIRE COMPRESSION SPACERS TO PREVENT CRUSHING, TO BE SUPPLIED BY OTHERS
7. VESTIS SYSTEMS PROVIDES INTEGRAL HARDWARE, SITE SPECIFIC MOUNTING HARDWARE BY OTHERS
8. ALL STRUCTURE BEARING LOAD OF CANOPY ANCHORS IS TO BE DESIGNED, ENGINEERED, AND SUPPLIED BY OTHERS

PROJECT NOTES

1. 8" FASCIA SHOWN; 8" & 10" STANDARD AVAILABLE
2. 12' WIDTH X 4' PROJECTION SHOWN
3. 12' MAXIMUM SINGLE CANOPY WIDTH, WIDER SPANS POSSIBLE WITH MULTIPLE CANOPY SECTIONS BOLTED TOGETHER
4. STANDARD LOAD DESIGN SHOWN
5. 3/4" PROFILE 29 GAUGE ROLLED-RIB ROOFING SHOWN

DRAWING SCHEDULE	
SHEET	DESCRIPTION
1	COVER
2	GENERAL NOTES/INFORMATION
3	GENERAL DIMENSIONS
4	BRACKET MOUNT DETAIL
5	FLUSH MOUNT DETAIL
6	DRAINAGE OPTIONS
7	KNIFE PLATE DETAIL
8	MOUNTING BRACKET DETAIL
9	LIGHT OPTION DETAIL

DESIGN NOTES

1. POWDER COAT FINISH, COLOR CHOSEN FROM VESTIS STANDARD COLORS
2. PAINTED FINISH ON ROOFING, COLOR TO BE CHOSEN FROM SUPPLIER STANDARD COLORS
3. COUNTER-FLASHING AND SEALANT BY CANOPY INSTALLER
4. DRAIN LOCATIONS TO BE DETERMINED AND APPROVED PRIOR TO FABRICATION
5. 125 PSF MAXIMUM DISTRIBUTED LOAD (LRFD). LIGHTER OR HEAVIER DUTY DESIGNS AVAILABLE

NOTES

REVISIONS

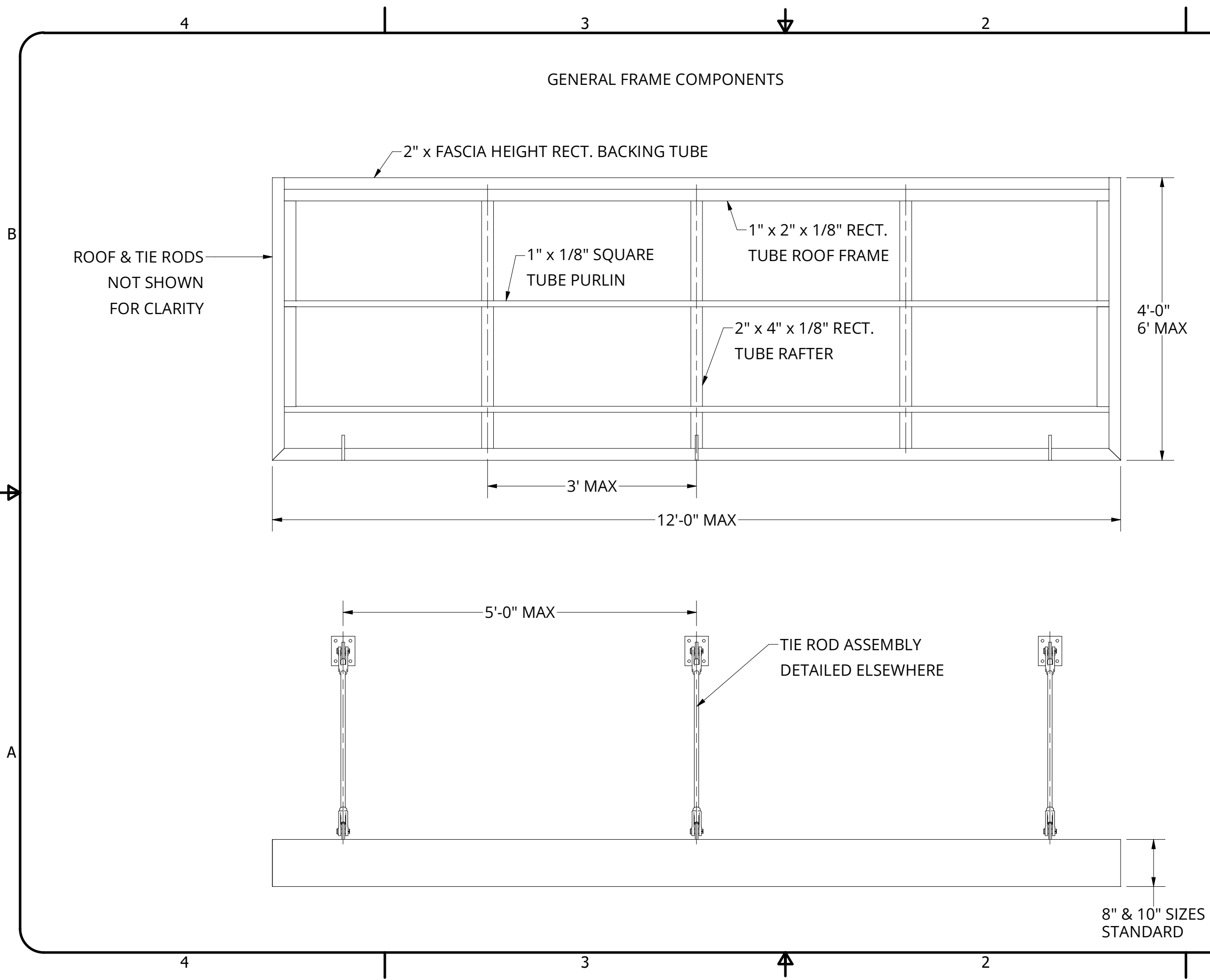
NO.	DESCRIPTION	DATE



213 E. Ermina Ave.
Spokane, WA 99207
Ph: (509)892-6180
Email: info@vestismfg.com

VESTIS MANUFACTURING
SPOKANE, WA

CANOPY BASIS OF DESIGN



NOTES

1. CONTACTING ALUMINUM COMPONENTS CONNECTED BY 1/8" FILLET WELDS UNLESS OTHERWISE SPECIFIED
2. COMPONENTS FROM 6061-T6 ALUMINUM UNLESS OTHERWISE SPECIFIED
3. FLAT FASCIA W/ FRONT DRAIN SHOWN

REVISIONS

NO.	DESCRIPTION	DATE

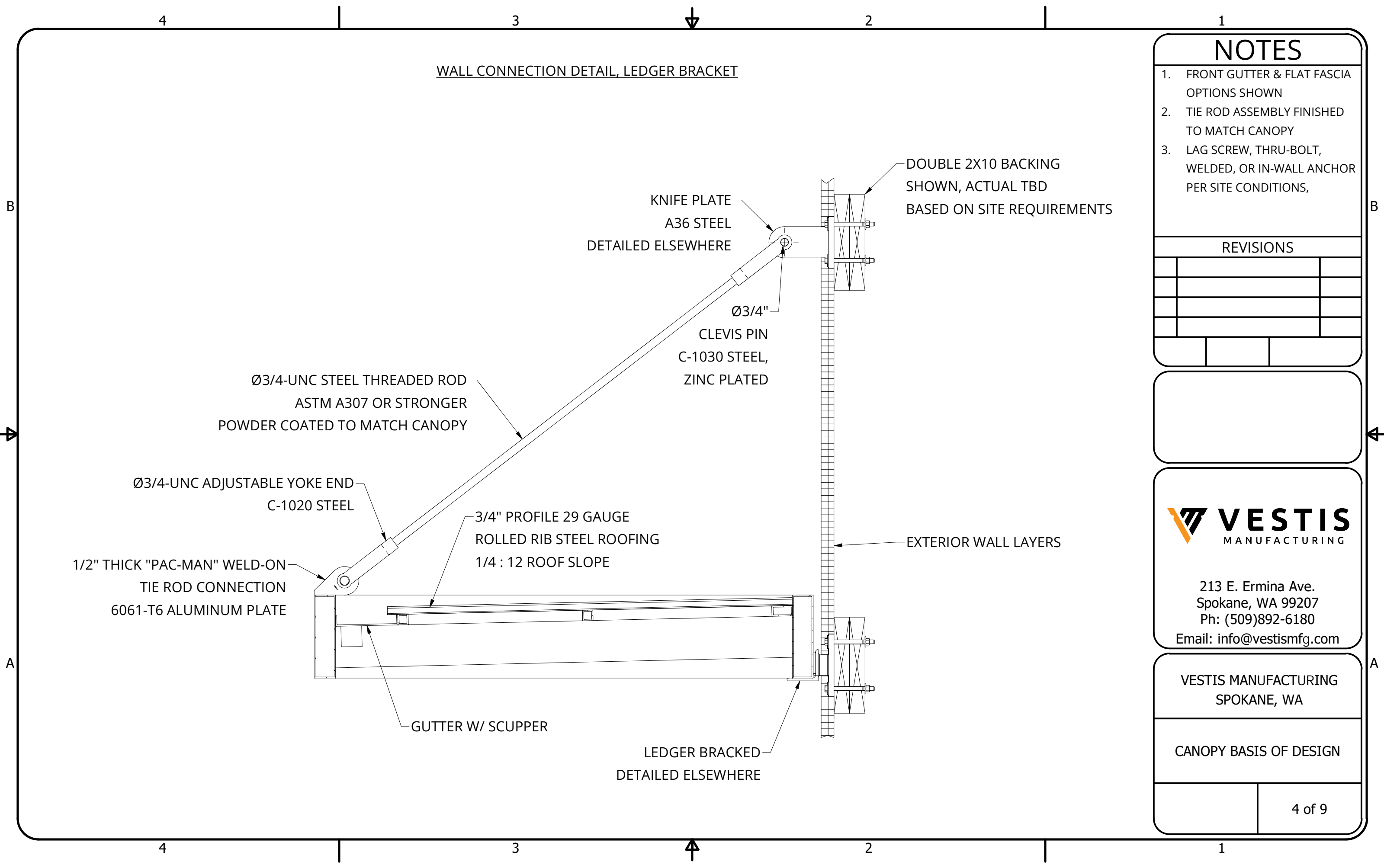


213 E. Ermina Ave.
 Spokane, WA 99207
 Ph: (509)892-6180
 Email: info@vestismfg.com

VESTIS MANUFACTURING
 SPOKANE, WA

CANOPY BASIS OF DESIGN

WALL CONNECTION DETAIL, LEDGER BRACKET



NOTES

1. FRONT GUTTER & FLAT FASCIA OPTIONS SHOWN
2. TIE ROD ASSEMBLY FINISHED TO MATCH CANOPY
3. LAG SCREW, THRU-BOLT, WELDED, OR IN-WALL ANCHOR PER SITE CONDITIONS,

REVISIONS

NO.	DESCRIPTION	DATE

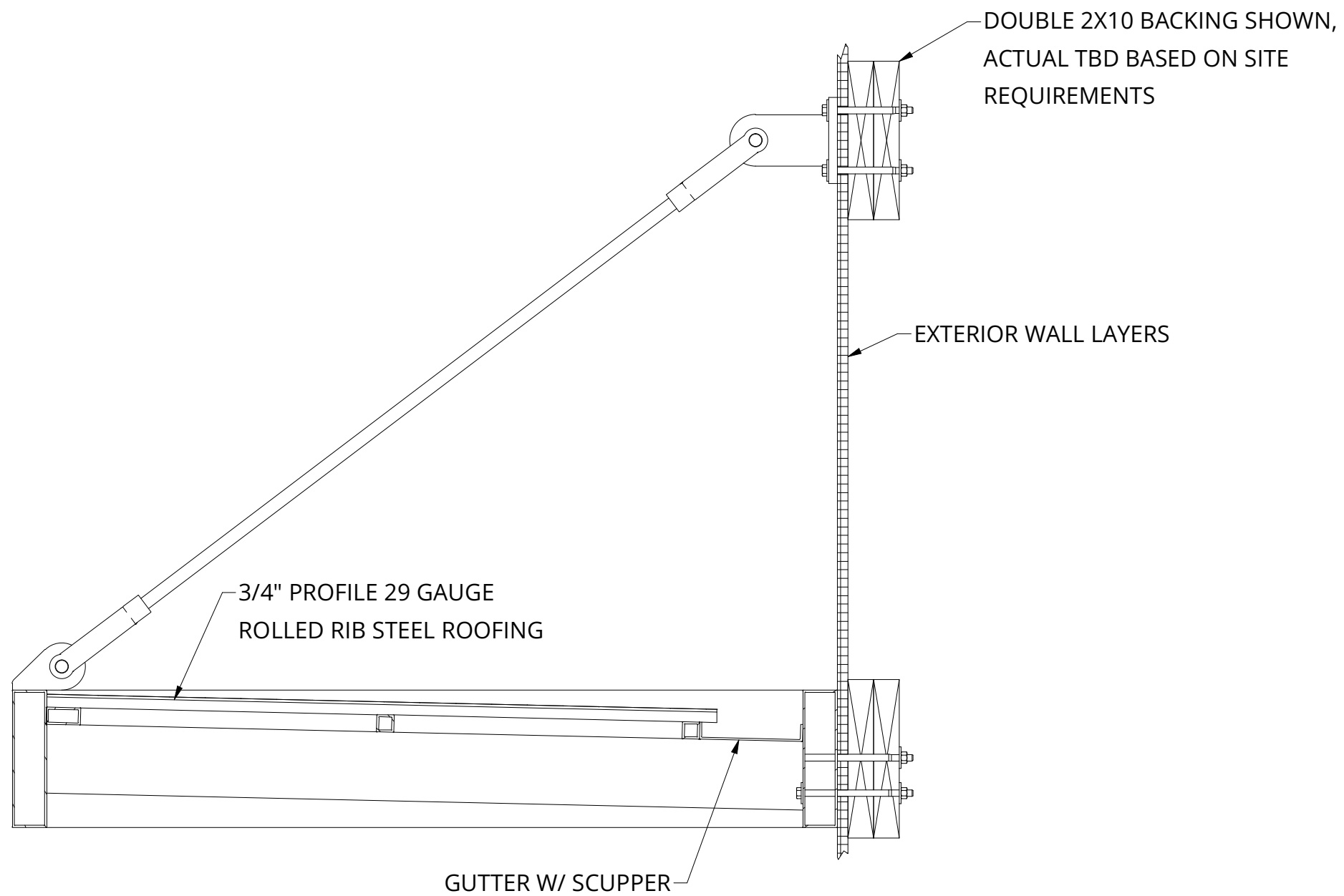


213 E. Ermina Ave.
 Spokane, WA 99207
 Ph: (509)892-6180
 Email: info@vestismfg.com

VESTIS MANUFACTURING
 SPOKANE, WA

CANOPY BASIS OF DESIGN

WALL MOUNT DETAIL, THRU-BOLTED WITH REAR GUTTER



NOTES

REVISIONS

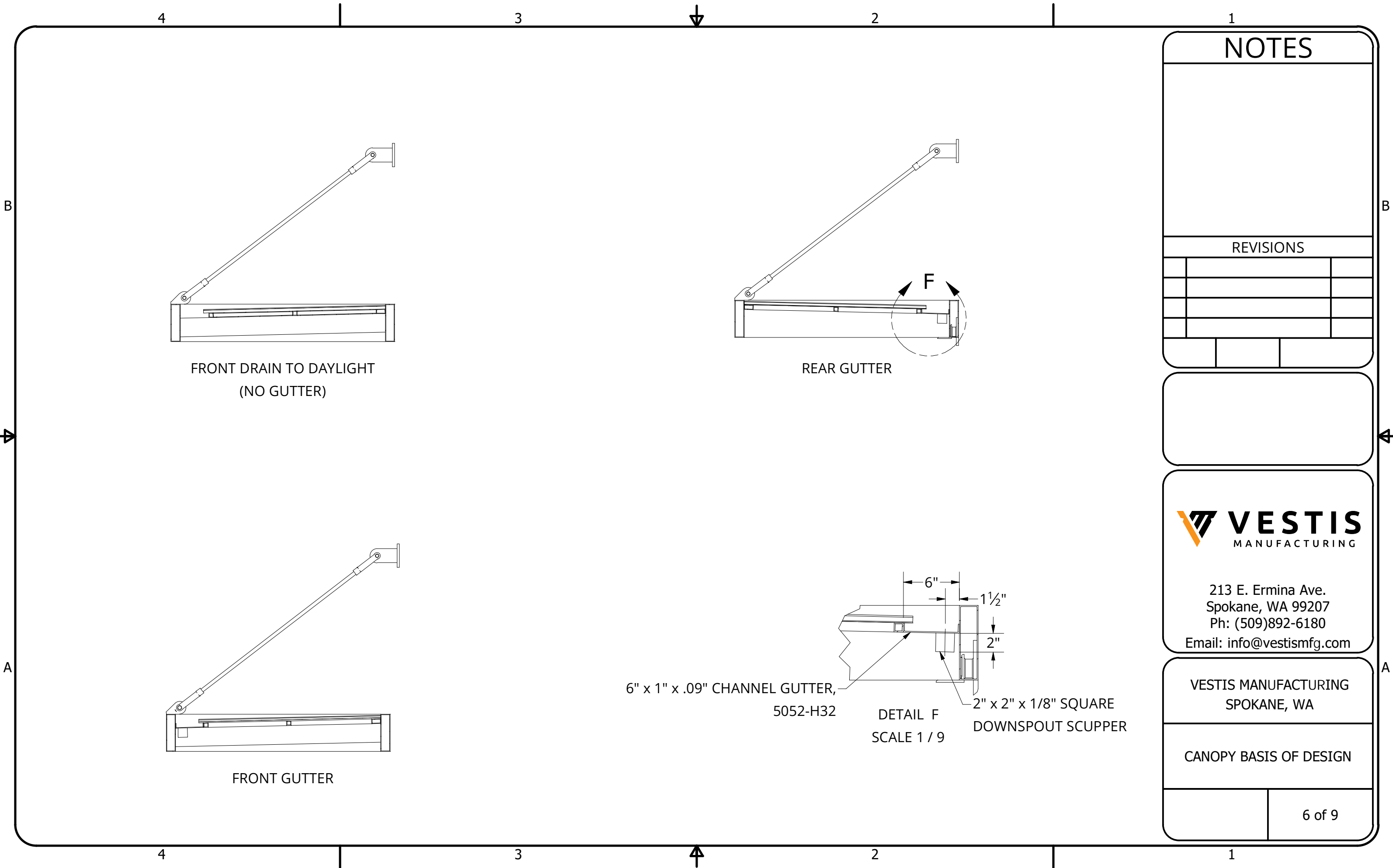
NO.	DESCRIPTION	DATE



213 E. Ermina Ave.
 Spokane, WA 99207
 Ph: (509)892-6180
 Email: info@vestismfg.com

VESTIS MANUFACTURING
 SPOKANE, WA

CANOPY BASIS OF DESIGN



FRONT DRAIN TO DAYLIGHT
(NO GUTTER)

REAR GUTTER

FRONT GUTTER

6" x 1" x .09" CHANNEL GUTTER,
5052-H32

DETAIL F
SCALE 1 / 9

2" x 2" x 1/8" SQUARE
DOWNSPOUT SCUPPER

NOTES

REVISIONS

NO.	DESCRIPTION	DATE



213 E. Ermina Ave.
Spokane, WA 99207
Ph: (509)892-6180
Email: info@vestismfg.com

VESTIS MANUFACTURING
SPOKANE, WA

CANOPY BASIS OF DESIGN

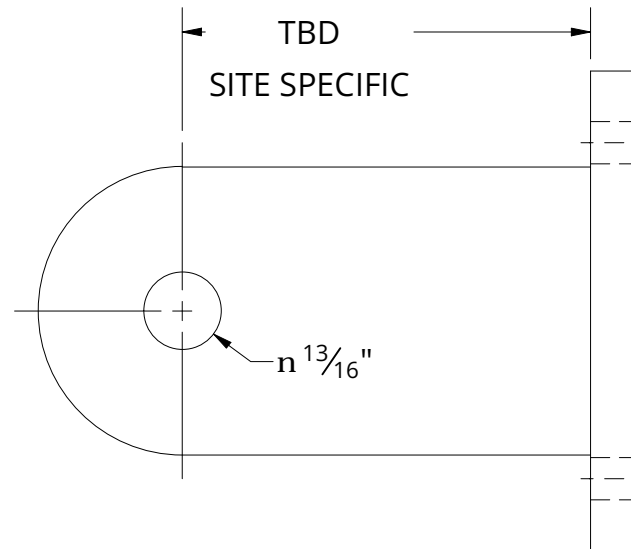
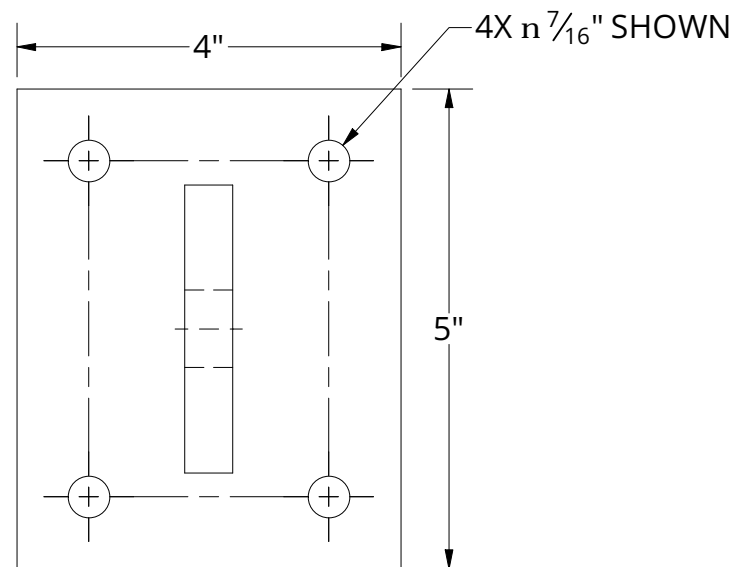
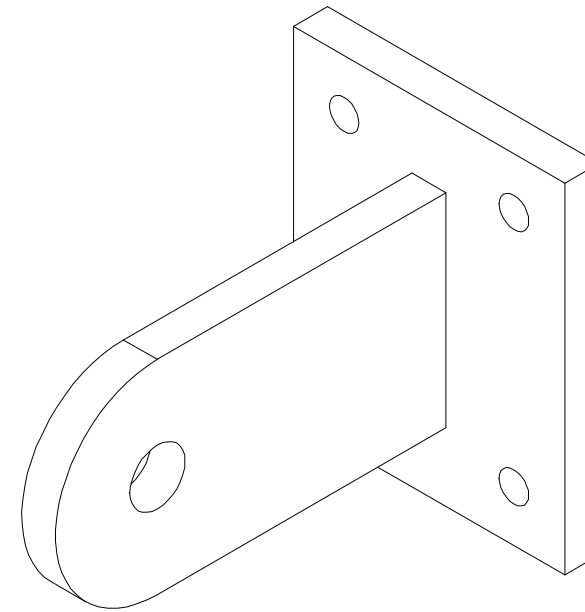
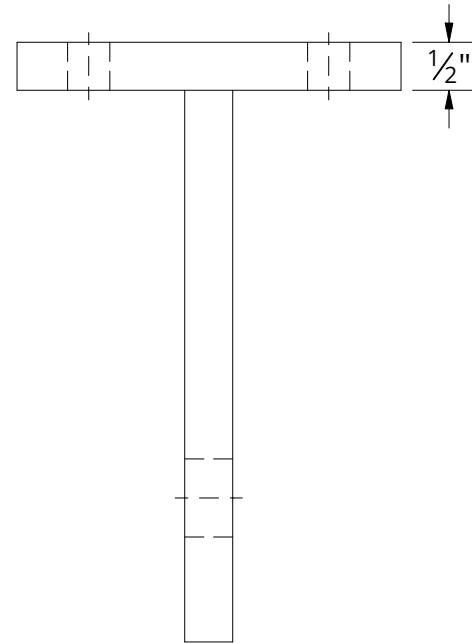
4

3

2

1

STANDARD KNIFE PLATE DETAILS



NOTES

1. 1/2" A36 STEEL PLATE
2. FINISH TO MATCH CANOPY
3. RECTANGULAR BACK PLATE SHOWN
4. KNIFE PLATE SUBJECT TO CHANGE DEPENDENT UPON MOUNTING CONDITIONS

REVISIONS

NO.	DESCRIPTION	DATE



213 E. Ermina Ave.
 Spokane, WA 99207
 Ph: (509)892-6180

Email: info@vestismfg.com

VESTIS MANUFACTURING
 SPOKANE, WA

CANOPY BASIS OF DESIGN

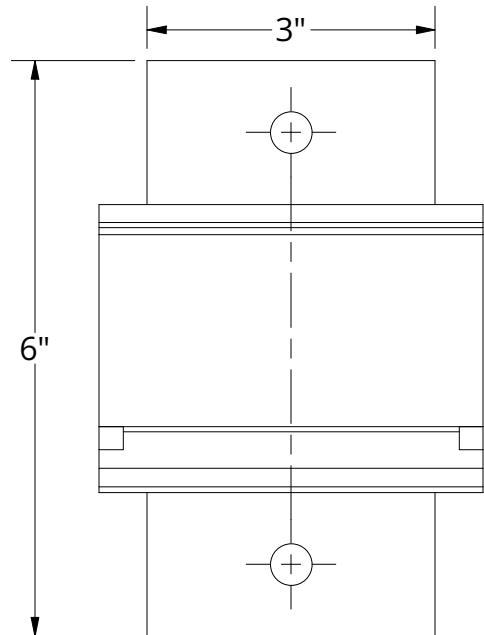
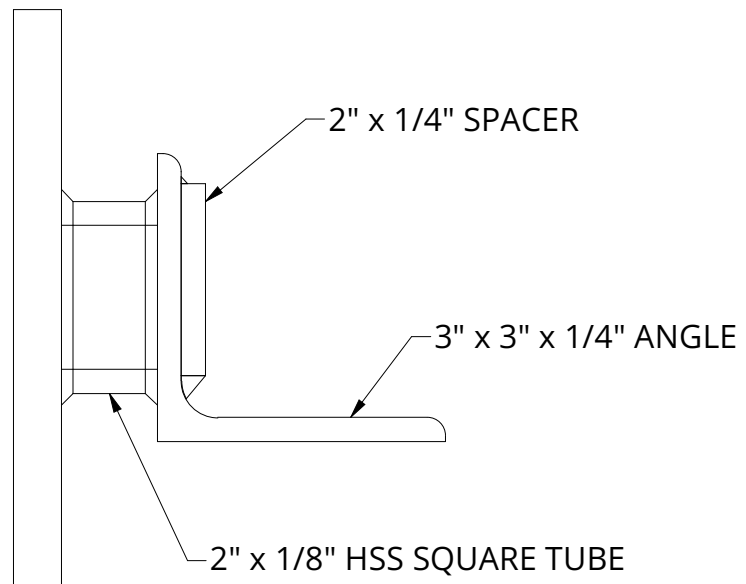
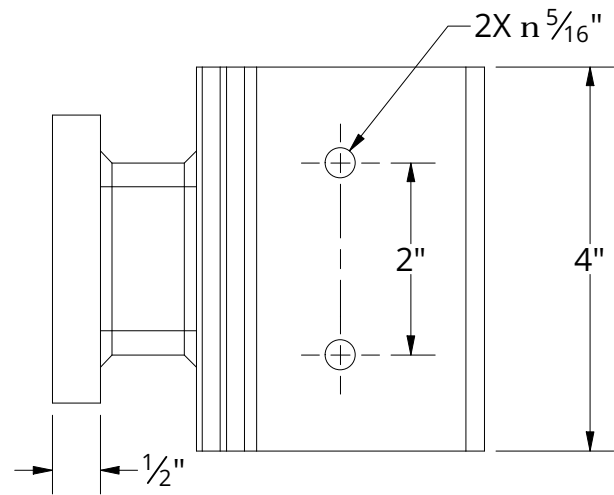
4

3

2

1

MOUNTING BRACKET DETAIL



NOTES

1. A36 STEEL PLATE & ANGLE
2. FINISH TO MATCH CANOPY
3. RECTANGULAR BACK PLATE SHOWN
4. MOUNTING BRACKET SUBJECT TO CHANGE DEPENDENT UPON MOUNTING CONDITIONS

REVISIONS

NO.	DESCRIPTION	DATE



213 E. Ermina Ave.
Spokane, WA 99207
Ph: (509)892-6180
Email: info@vestismfg.com

VESTIS MANUFACTURING
SPOKANE, WA

CANOPY BASIS OF DESIGN

4

3

2

1

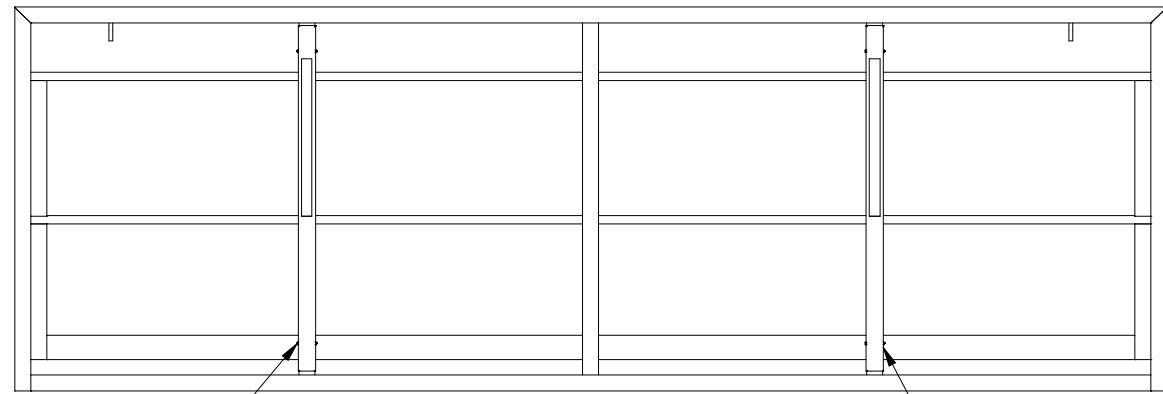
NOTES

- 1. 4' MINIMUM PROJECTION REQUIRED FOR LIGHTS
- 2. LIGHT HOUSING POWDER COATED TO MATCH CANOPY
- 3. 800 LUMEN, 9.2 W, 4000K LED LIGHT MODULE

REVISIONS

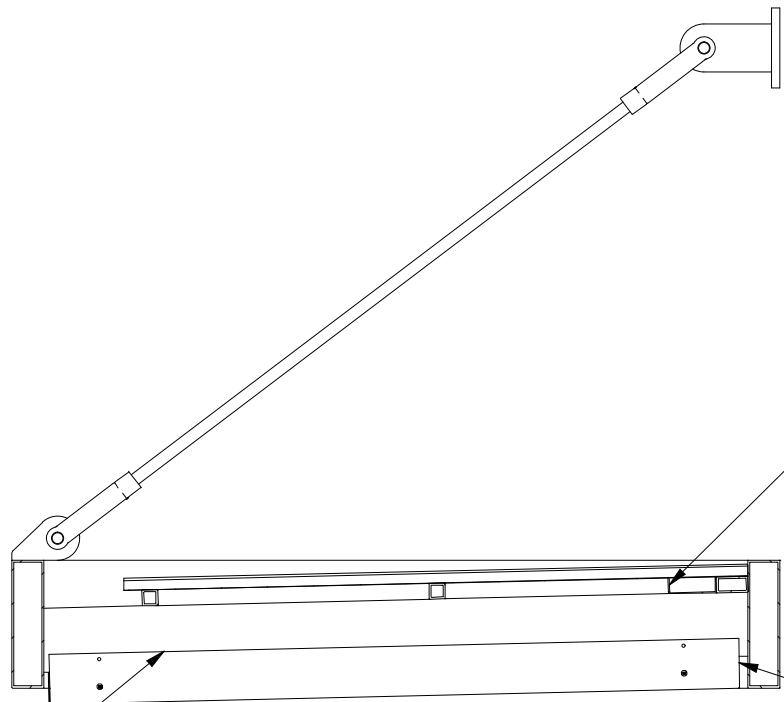
NO.	DESCRIPTION	DATE

OPTIONAL LIGHT BARS



OPTIONAL INTEGRATED LIGHT BAR

SYMETRICALLY SPACED FOR EVEN LIGHTING



3" x 1" x 1/8" CABLE CHANNEL

WIRED TO JUNCTION BOX USING 12 GA. UF CABLE (NOT SHOWN)

ATTACHED USING 4X Ø1/4" TEK SCREWS TO RAFTER PER LIGHT BAR

LIGHT BAR DETAIL
SCALE 1"=1'-0"



213 E. Ermina Ave.
 Spokane, WA 99207
 Ph: (509)892-6180
 Email: info@vestismfg.com

VESTIS MANUFACTURING
 SPOKANE, WA

CANOPY BASIS OF DESIGN

4

3

2

1